

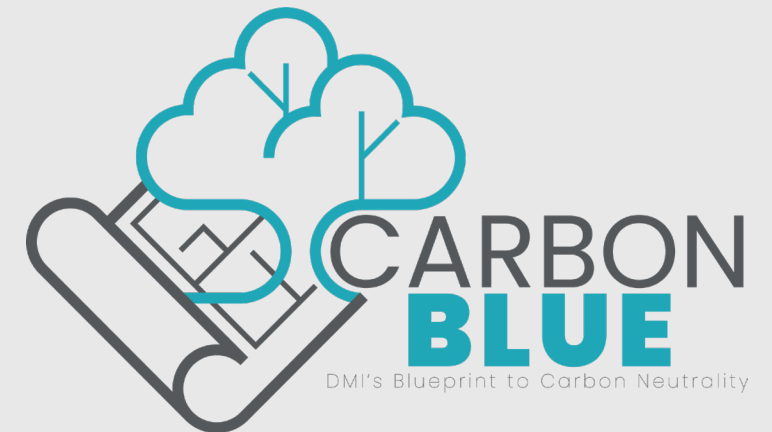
The background of the slide features a delicate arrangement of white flowers and green stems. The flowers are small and daisy-like, with some in full bloom and others as buds. The stems are thin and green, creating a natural, organic feel. The overall composition is clean and minimalist, with the text centered in a white box.

# DMI COMPANIES SUSTAINABILITY

PREPARED FOR CATALYST CONNECTION

## SUSTAINABILITY INITIATIVES / ENVIRONMENTAL RESPONSIBILITY

- Currently DMI Companies is involved in several Sustainability Initiatives to support the goals of our mission statement and our Carbon Blue program that is focused on energy neutrality. These initiatives range from Zero Waste to Landfill operations to support our TRUE Certification to weather monitoring to understand the capability of production of renewable power.
- We aim to implement operations and waste reduction policies that ensure proper environmental stewardship of resources within the guise of meaningful environmental harm reductions inline with the USGBC.



# PROJECTS AND DETAILS:

- TRUE Zero Waste to Landfill certified projects:
  - Two of our four production facilities are now diverting 90% or more of waste from landfill operations or incineration.
    - Monongahela – Gold Certified maintaining an average of 95% diversion.
    - Wagoner – Certified in 2024 with 90.4% diversion.
- LED Lighting and energy efficiency upgrades: DMI continues to focus on Scope 2 emissions or indirect emissions from purchased electricity and heat. We are following the World Resource Institute Greenhouse Gas Protocol handbook. Currently, DMI is examining options for electrical monitoring, energy consumption of machines, lighting, and operational procedures. Included in this, DMI is actively moving away from fluorescent lighting to LED lighting complete with motion and occupancy sensors to reduce our total electrical power purchase.



# PROJECTS AND DETAILS CONTINUED:

- Renewable Power Production and Storage: DMI is heavily involved in research and data gathering to determine feasibility of renewable power production through wind power and solar arrays at our Monongahela Plant. We plan to expand this program at our other locations as we gain understanding of renewable power generation capabilities. DMI has two weather monitoring stations collecting and reporting data such as wind speed, direction, solar azimuth, and daily elapsed solar radiation. The completed data will allow DMI to work with vendors and contractors to determine the viability of our property to produce power and help to reduce or remove our reliance on grid power. The storage of this power is a secondary discussion as we understand our capabilities. (Picture to right)
- We have a solar array on the top of our headquarters office in Charleroi (below).

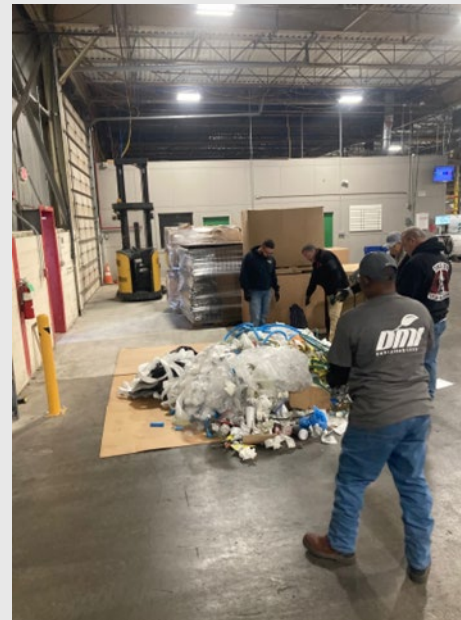


# INTEGRATING SUSTAINABILITY

- Sustainability is an integrated and focal point in the culture of DMI Companies. Through our sustainability programs and outreach to employees, starting from day one, they are informed and instructed in the importance of sustainability to our company. We actively engage with employees to understand any challenges they may face or opportunities as it relates to evolving our program.
- We continue to grow by developing products and technologies that benefit society and reduce the impact of our manufacturing process. To be successful, each employee is encouraged to consider their daily actions as they relate to each project and task, from safety, to compliance and all business practices with an eye towards environmental consciousness.
- Sustainability development and implementation occurs in all departments from Purchasing to Marketing and Production. Through this fully involved approach, focusing on the lifecycle of materials, DMI can monitor acquisition of raw materials all the way to final disposal.



- As part of our procurement policy, DMI endeavors to source materials with recycled content, environmentally preferred products, and/or requiring packaging material for all purchases to be of recycled content or green, environmentally preferred material.
- This policy allows for ease of waste management practices throughout production, whether the material is metal, cardboard, paper waste, or plastic, all these items have a specific set of internal regulations that allow for effective recycling and reduction of wastes.
- Additionally, our policy supports the Sustainability of the Purchasing Department's initiative to reduce-reuse-recycle through minimizing the creation of waste, the reuse of materials, and the purchase of green, environmentally friendly products when possible.



- DMI reuses as many containers as possible. The reuse of containers is a constantly evolving process, and employees evaluate all inbound shipments.
- We reuse transport containers both internally for storage and externally when products are shipped to our customers.
- Employee involvement is crucial to the success and implementation of our sustainability endeavors.
- All employees are encouraged to remain mindful and be active participants in helping DMI to maintain a culture of healthy environmental stewardship.



# EARTH DAY

- o DMI has a number of exciting sustainability projects and achievements we would like to showcase as part of the Earth Day campaign. In addition to the programs listed above DMI, is currently involved with an in-house composting program which operates from April 31st- October 1st.
- o In partnership with our Wellness Committee, we are developing a garden for use on site by employees who are interested in contributing. We anticipate to start planting at the beginning of May.
- o DMI Sustainability has also purchased wildflower seeds to distribute to our employees company-wide on Earth Day to allow employees to plant the seeds, giving pollinators in our respective geographic areas an additional food source.

